

Interactive Dashboard Digital Opportunities

User Guide

5th June, 2017

Version 1.0

Overview

The Interactive Dashboard for Modelling an Alternative Future - Digital NHS in London supports planning, commissioning and implementing of Digital initiatives for London, STP and CCG level. Its key purposes include:

- 1) Identification of Digital Interventions at London level
- 2) Drilldown to STP level
- 3) Drilldown to CCG level

To open the Interactive Dashboard click on this link (<http://i5health.com/DigitalDashboard.html>) and select London or STP to navigate the Digital initiatives.

The dashboards are arranged for three different levels of breakdown, **London** where all STPs are shown, **STP** where all CCGs are shown and **CCG** where all GP practices are shown.



Please select the relevant dashboard from the landing page e.g. London as shown below.

Please click on the link below to download the Impact Analysis of Digital initiatives on local Health Economies presentation that was given to the London STP leads in June 2017:

- [Presentation - Impact Analysis of Digital initiatives on local Health Economies](#)

Please click on the link below to access the Interactive Dashboard for Digital Opportunities in London

[London Dashboard](#)

Please click on the link below to access the Interactive Dashboard for Digital Opportunities for London STPs

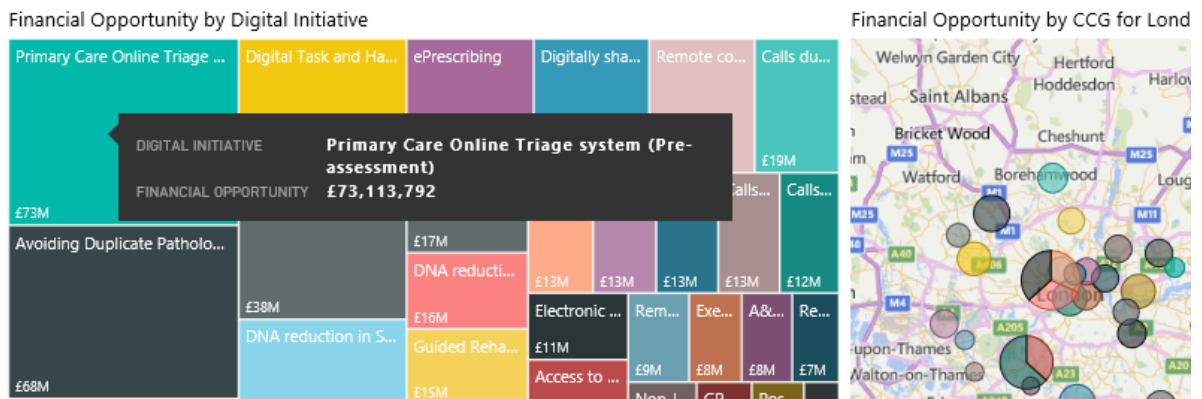
- [North Central London STP](#)
- [North East London STP](#)
- [North West London STP](#)
- [South East London STP](#)
- [South West London STP](#)

Identification of Digital Interventions

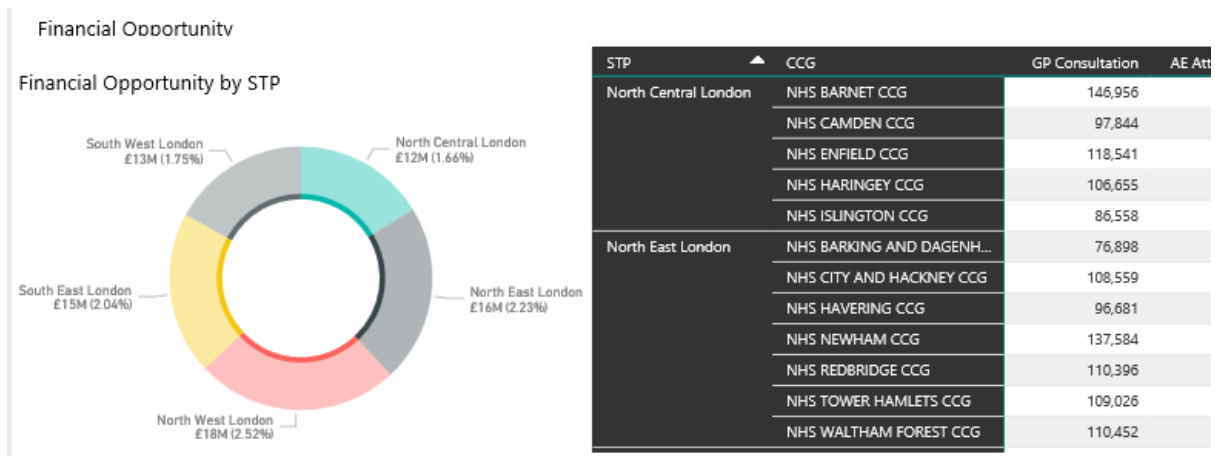
The dashboard opens up with the overview page where users can select various filter options which include the Financial Year (1st April – 31st March), Care Type such as planned or unplanned and the CCG of interest. By default all filter options are selected and it is highly recommended to set the appropriate year to the latest (2016/17 at the time of writing).



User can navigate the dashboard data by clicking on the coloured tiles to select a specific Digital initiative to evaluate the opportunity. For example Primary Care Online Triage shows that there is a £73m opportunity for London from this intervention in 2016/17.

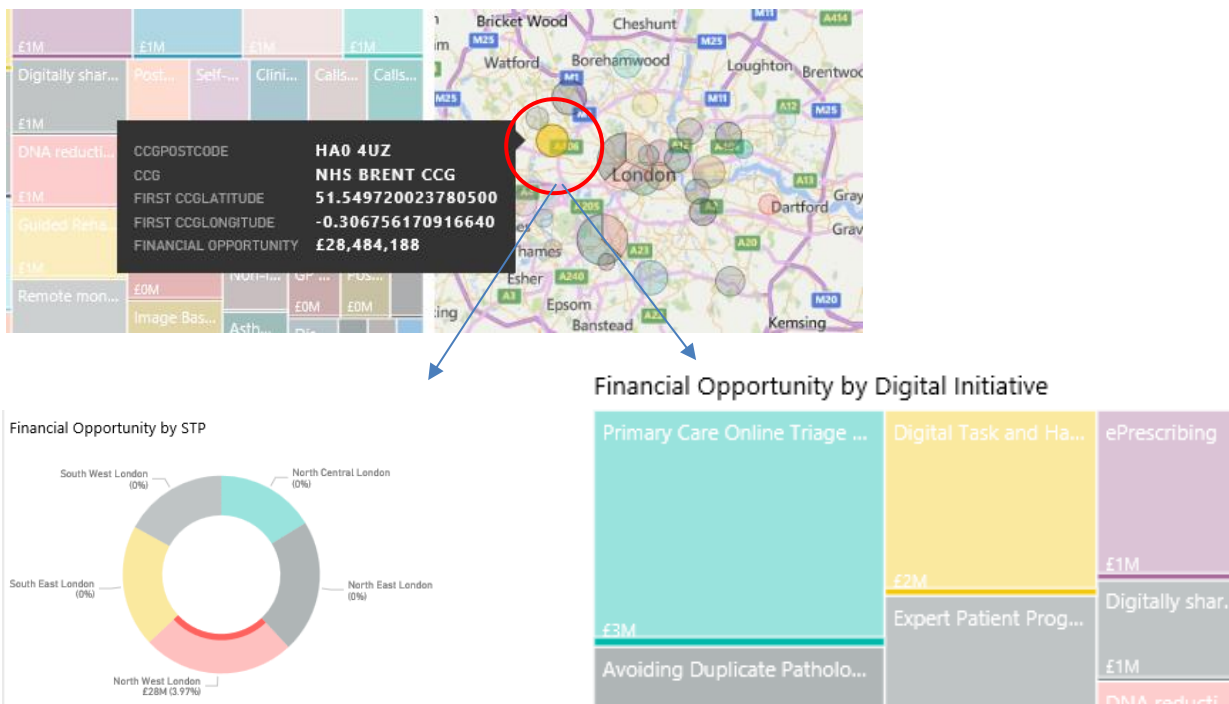


Selecting a specific intervention also causes the STP doughnut and CCG list to update and display information relating to the selection only. For Primary Care Online Triage, each of the STP and CCG opportunities are filtered by the selected initiative as shown below. Please note that the CCG opportunity table breaks down the selected interventions into impacted settings e.g. GP Consultation, A&E Attendance, OP Appointment, Bed Days and Admissions. The impacted settings depend on the selected intervention(s) and are aggregated.

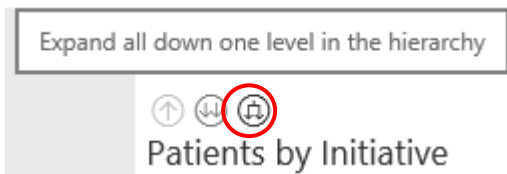


Selecting a CCG from the heat map changes the Opportunity by Initiative tiles and the Saving by STP doughnut chart. In the example below, Brent CCG was selected with the Opportunity tiles and STP doughnut highlighting the number of patients referring to Ealing CCG.

Selecting Brent CCG in the heat map will highlight its share of patients in the STP doughnut and in the Initiative tiles charts.

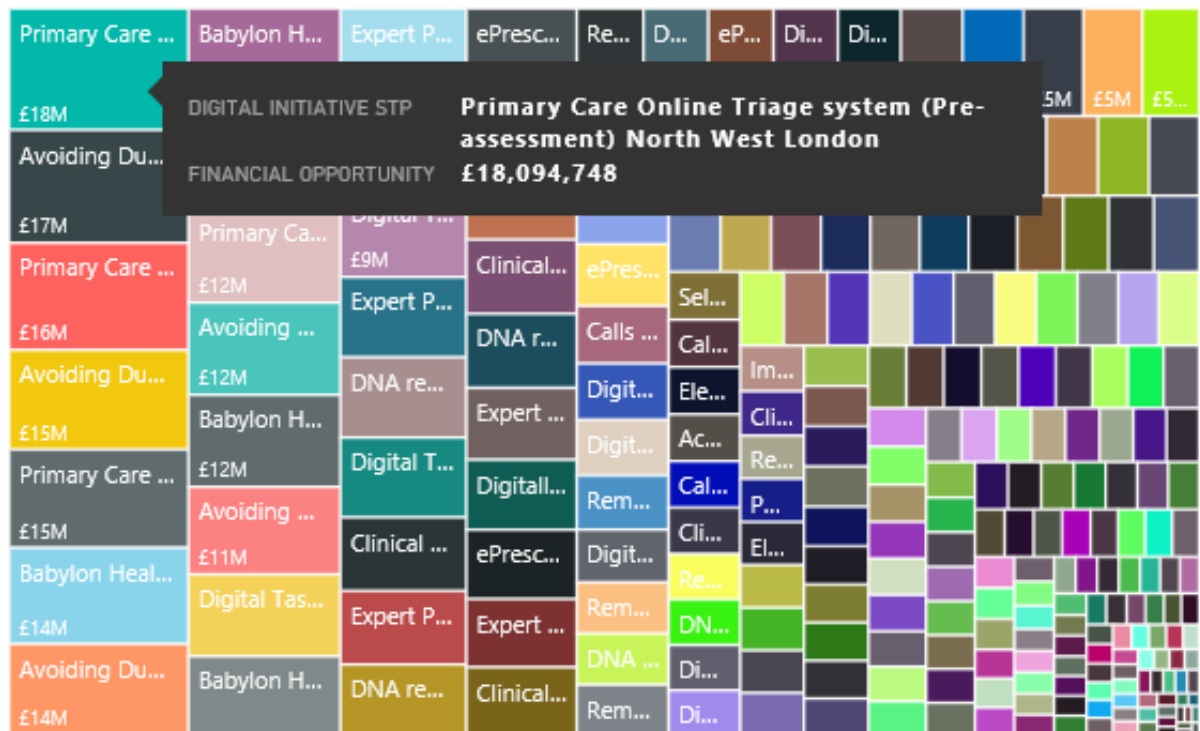


Users that would like to drill down further into specific initiatives and their conditions can click on the hierarchy expansion button shown below. This will further breakdown the initiatives in the tile chart by Initiative by STP (level 1) and after clicking it again (level 2) Initiative by STP by Condition.



Financial Opportunity by **Initiative and STP** (level 1) e.g. opportunity for Primary Care Online Triage and North West London STP.

Financial Opportunity by Digital Initiative and STP



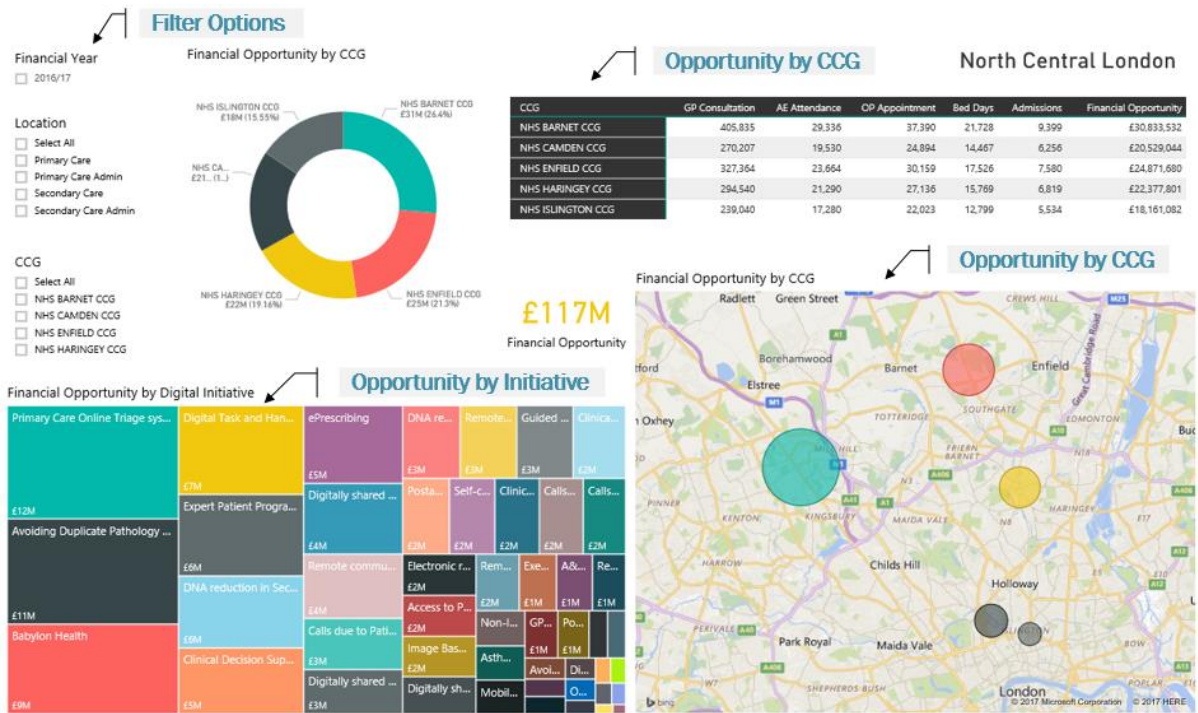
Financial Opportunity by **Initiative, STP and CCG** (level 2) e.g. opportunity for Primary Care Online Triage for North Central London STP and Barnet CCG.

Financial Opportunity by Digital Initiative, STP and CCG



Drilldown to CCG Level

To analyse the opportunities at CCG level, please select the STP where the CCG(s) of interest are members of. The following dashboard shows South West London STP at summary level with its CCGs in the heat map and table.



Further drilldown into the tile chart and selections in the heat map operate in the same way as described in the earlier section.

Further information and updates can be found on the i5 Health FAQ on Digital initiatives on:

<http://i5health.com/hlpDigital.html>